



Precious and Rare: Islamic Metalwork from The Courtauld

Cultures in Conversation

9 October 2020 – 10 January 2021

Migration

See how the ebb and flow of people, goods, and ideas – through trade and conflict – influenced design.



Trade

Learn about Islamic craftsmen and how they adapted their traditions, reinterpreting local designs for the export market.



Influence

Discover how skilled artisans respecting – and responding to – creative techniques produced some of the world's finest metalwork.



Today's conversations

Discover more about metalworking techniques, and find out how to create your own Islamic pattern.



In partnership with

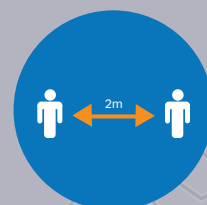
The Courtauld



Art Fund_



**Wear your
face covering**



**Keep a safe
distance**



**Sanitise your
hands**



**Please take photos
(no flash)**



**No public toilets
in the Museum**

HISTORY OF SCIENCE MUSEUM UNIVERSITY OF OXFORD

Broad Street, Oxford,
OX1 3AZ, UK

www.hsm.ox.ac.uk
info@hsm.ox.ac.uk
01865 277293

OPENING HOURS

Tuesday to Sunday,
12–5pm
Closed on Mondays

Find us online @HSMOxford



Supported by
**ARTS COUNCIL
ENGLAND**



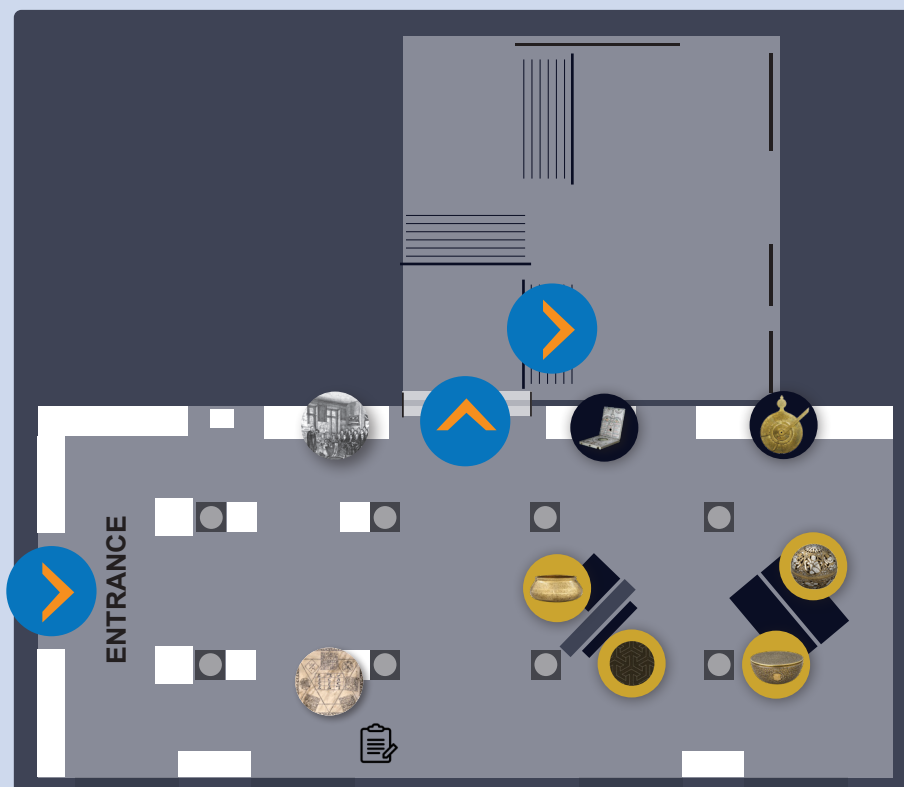
HISTORY OF SCIENCE MUSEUM

MAP

YOUR JOURNEY STARTS HERE ...

£1

ENTRANCE GALLERY



A remarkable building

The History of Science Museum was founded in 1924 but the building itself has a much longer history. The first home of the Ashmolean Museum in 1683, it remains the world's first purpose-built public museum.



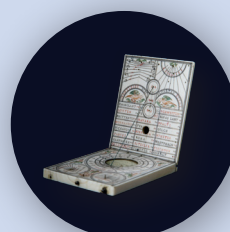
Talking to angels

This marble slab is an early copy of a wooden tablet made by John Dee in 1582 to help explore the natural world by talking with angels.



A passion for dials

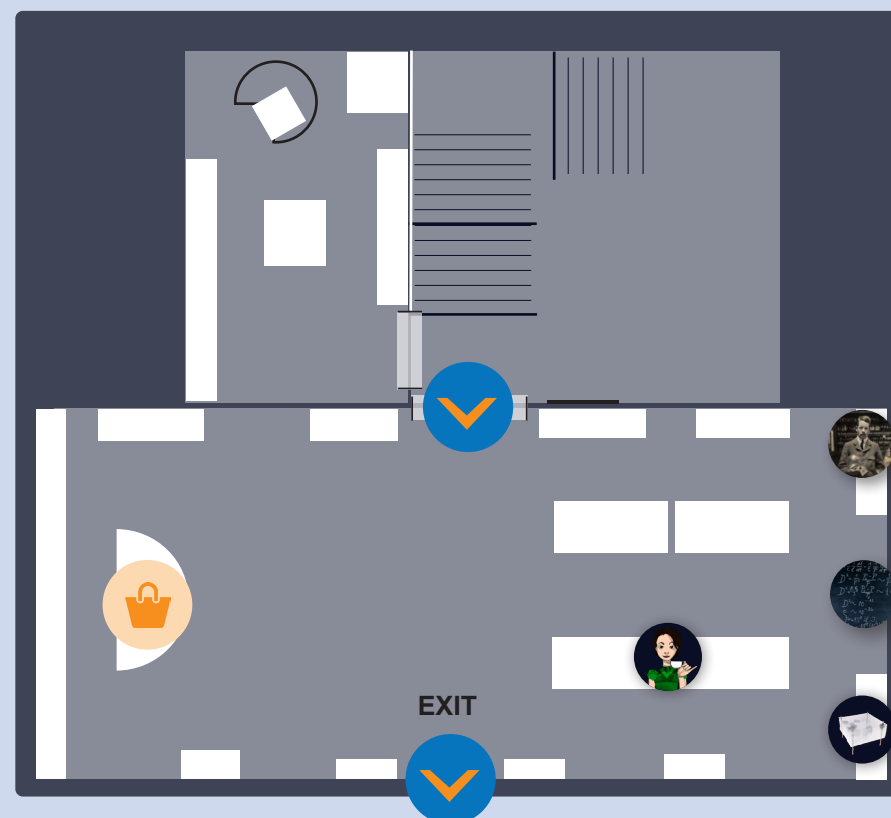
Explore the collection of our founder, Lewis Evans and discover his fascination with non-mechanical ways of telling the time - especially sundials.



A special sundial

You can see our founder, Lewis Evans, holding this pocket sundial in his portrait hanging in the Entrance Gallery.

BASEMENT GALLERY



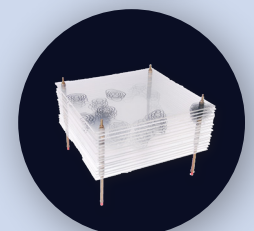
Alice in Typhoidland

Take a tour of the past and present of typhoid control. Discover the first vaccines, current global challenges, and what Oxford researchers are doing to tackle them.



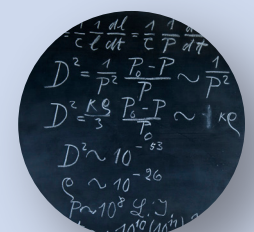
The periodic table

Discover Henry Moseley's pioneering new approach to ordering the periodic table - and how we still use it today.



Mapping penicillin

This map was made by Dorothy Crowfoot Hodgkin, and is a model of the molecular structure of penicillin. Hodgkin remains the only British woman to have received a Nobel Prize for science, which she won in 1964.



Einstein's blackboard

Albert Einstein calculated the age and size of the universe on this blackboard during a lecture in Oxford in 1931.

MORE TO EXPLORE

Cultures in Conversation Online

There's more to explore:

Delve into the themes with our online Exhibition Cases

Discover Community objects and stories

See more of your favourites from our Islamic collection

hsm.ox.ac.uk

Discover. Connect. Inspire. Make the most of your visit



SUPPORT

Entry is free - please donate £5 to help us look after the collections and host more public exhibitions and events.



SHOP

From astrolabes to the periodic table, our shop is inspired by our unique collections. Find gifts for all ages and interests.



SHARE

Share your visit using #HSMOxford

